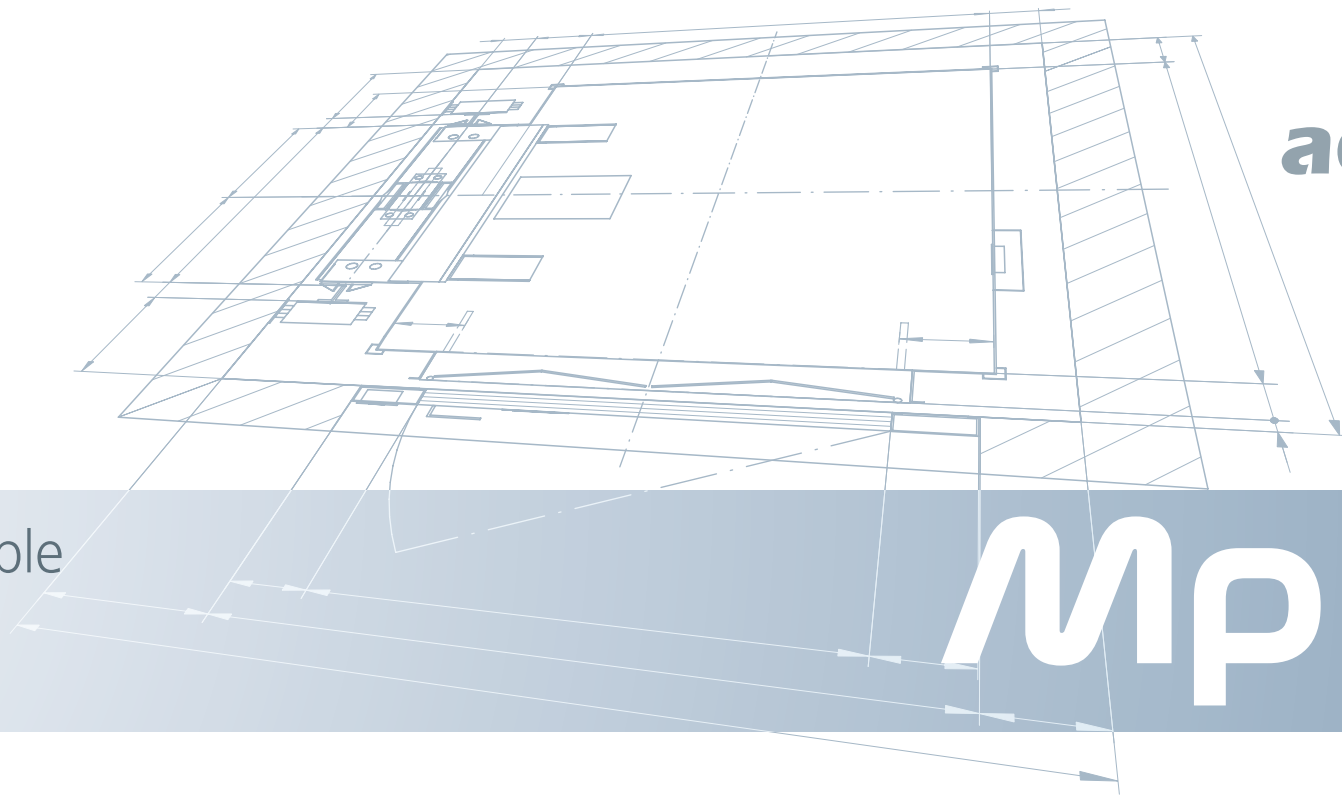




Mp Mobi

A homelift designed for houses
and providing accessibility



homelift
accessibility
safety
robust
eco-efficient
connectivity
versatile

mp moving people

mp mobi



Mp Mobi

 A homelift designed for houses and providing accessibility

Comfort and safety

A truly high-performance and user-friendly lift, which adds value and accessibility to your house or building. Includes an automatic rescue system as standard for maximum safety.



Application range

Homelift



CAPACITY
2-13 PERSONS (180 - 1000kg)



NO. STOPS
6 (MÁXIMUM)



SPEED
0,15 m/s

ACCESSIBILITY
in Private Homes

MP Mobi gets rid of physical barriers, making it easier for those with reduced mobility to get around at home. It is also a good option for buildings used as shops or healthcare facilities.



ARCHITECTURAL VERSATILITY

MP Mobi can be used on the inside or outside of buildings, and offers a wide range of options in terms of aesthetics and configuration, meaning it will fit in perfectly with your building.





Your safety and well-being are our number one priority

Automatic rescue system as standard

MP Mobi comes equipped with a battery system which, in the case of power outages, ensures the lift is able to make its way to the nearest landing and open its doors.

MP MOBI SAFETY
Automatic sliding folding door in the car
Alarm pushbutton and pushbutton to open doors
Emergency car light for use in the event of a cut in the mains power.
Optical-acoustic overload control
Emergency phone
Non-skid rubber floor
Automatic rescue in the event of there being no mains power
Manual rescue using the emergency pushbutton in the hydraulic power centre.
Rupture valve in the event of breakage in the hydraulic valve.
Mechanical block in the pit and overhead against uncontrolled car movements (for maintenance work in the shaft)
Two reset keyswitches (pit and overhead) on the controller
Out of order keyswitch on the landing operating panel
Connected lift (optional)



User-friendly

The car has a built-in door, meaning unrestricted use and functioning similar to that of a conventional lift. This means maximum safety and avoids the need for passengers to have to continuously press the lift's button ('constant pressure' control system), something common in other homelifts.

Robust and high-quality

MP Mobi is designed using the same technology as a lift intended for intense use in public buildings. This means maximum reliability and an extended useful life.

ECO-EFFICIENT

The hydraulic technology of this lift ensures its impact on the environmental is minimal. The car includes a light timer system, allowing you to cut energy consumption.



Details on a large scale

MP CARrevolution

At MP Lifts, we want to make your life easier. That's why we provide you with all the tools necessary for the design of your car to be a perfect fit with the design of your building. No more restrictions, no more looking through lots of options and models which don't fit in with your designs.

Now all you have to do is choose a car range and then design your car. You can choose from our many finishes and combine them as you want.

Furthermore, you can achieve even greater integration with the interior design of your home by customising the car with our MP AMBIENTUM range:

- AMBIENTUM COLOR with striking colours.
- AMBIENTUM JL with stunning photographs from our collection.
- AMBIENTUM UNIKE with an image of your choice.

Now available our PANORAMICS car range.

FOR MORE INFORMATION, VISIT:
mpcardesigner.com



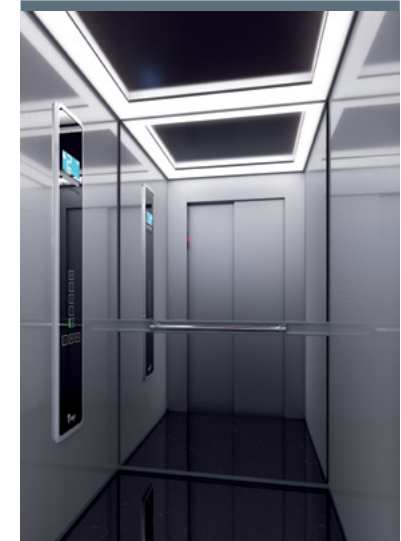
➤ VILITER
Plastic-coated steel



➤ STYLE
Melamina | Laminated Plywood



➤ SUPRA
Stainless steel



➤ SUPRAMAX
Chipboard with milled
phenolic laminate



➤ AMBIENTUM
Customised walls with coloured
glass panels or printed photos



➤ AMBIENTUM
Customised walls with coloured
glass panels or printed photos





FUSION SUPRA

FULL HEIGHT COLUMN



X02

SB Stainless Steel



X02

SB Stainless Steel



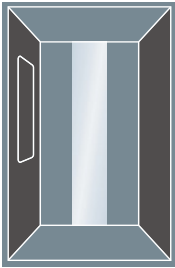
TFT028 (2,8")



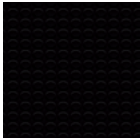
TFT043 (4,3")



TFT070M (7")



Width of Panel mirror



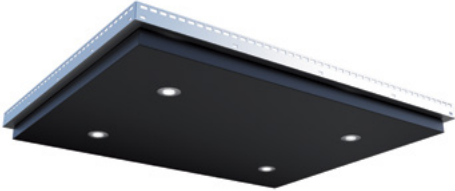
R24

Circle Black



R28

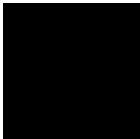
Circle Grey



L40 (lighting H80)



K01 White



K04 Night Black



K10 Atlantic Blue



K11 Techno Grey



K17 Nature Beige



Handrail P13x12

Standard options, to access the full range of finishes consult our car catalogue MP CAREvolution



mplifts.com/carevolution



HOMELIFT

MP Mobi**FEATURES**

TYPE:	Hydraulic lift platform
LOAD:	180 kg to 1000 kg (P+Q, 2000 kg maximum)
CAPACITY:	2 to 13 persons
SPEED:	0.15 m/s

TRAVEL RANGE: Up to 18 m

ENTRANCES: Single entrance, double 180° entrance, double 90° entrance and triple entrance

SERIES: "C" With machine room and "S" machine room less

CABINA

MODEL: VILITER KOLORO

(Optional: curtain photocell)

Jamb arrow direction

(Optional: other car models, see catalogues)

EXTERIOR DIMENSIONS: See table

HEIGHT: 2100 mm

(Optional: other heights)

CAR DOORS

TYPE: Automatic: 2 side-opening panels. 3VF
(Optional: other models)

FINISH: Stainless steel (X02)

DIMENSIONS: Ver tabla x 2000 mm

(Optional: other heights)

LANDING DOORS

TYPE: Automatic: 2 side-opening panels
(Optional: other models)

FINISH: Epoxy RAL 7044
(Optional: Stainless steel X02)

DIMENSIONS: See table x 2000 mm
(Optional: other heights)

FIRE RESISTANCE CLASSIFICATION: E120, EW60 according to EN 81-58
(Optional: other classifications)

SHAFT

DIMENSIONS: See table

PIT: See table

HEADROOM: See table

CAR OPERATING PANEL

MODELO: FUSION SUPRA

FINISH: Stainless steel X02

Optional: other car operating panel models, see catalogues

PUSHBUTTON: Mechanical, polycarbonate plastic, fireproof pushbutton lit using Leds

(Optional: Mechanical, stainless steel pushbutton with halo lighting)

CAR INDICATOR: Display made up of 2 digits of Leds with 7 segments

TFT color display

SAFETY: Emergency light and telephone

LANDING OPERATING PANEL

MODEL: P001, on the door frame

FINISH: Placa de acero inoxidable (X02)

PUSHBUTTON: Mechanical, polycarbonate plastic, fireproof pushbutton lit up with Leds

(Optional: Mechanical, stainless steel pushbutton with halo lighting)

ENGRAVING: Black logo (done with laser)

CONTROLLER

TYPE: Microbasic controller. Down collective or pick-up

LOCATION: In the machine room for "C" series. It may be placed anywhere within the machine room

In the cabinet for "S" series. Epoxy finish.

Recommended distance < 10 metres

ELECTRICAL INSTALLATION

Pre-assembled with "Plug & Play" connectors

HYDRAULIC POWER UNIT

Motor Manometer-Thermistor. Thermal oil contact

Electromechanical valve block MP sava3

Manual pump. Oil

Automatic rescue

JACK

In 1 section up to 9800 mm of travel range, in 2 sections from 9800 mm

GUIDE RAILS

rawn in accordance with ISO 7465

FIXINGS

Fixing brackets and plugs for concrete enclosure

CARACTERÍSTICAS ELÉCTRICAS

POWER SUPPLY VOLTAGE: 380 V three-phase.
Optional 220 V one-phase

LIGHTING VOLTAGE: 220 V

FREQUENCY: 50 Hz

CONNECTIVITY

We offer the option of remote maintenance and an emergency telephone with regular monitoring to ensure your emergency line is working 24 hours a day, 365 days a year.

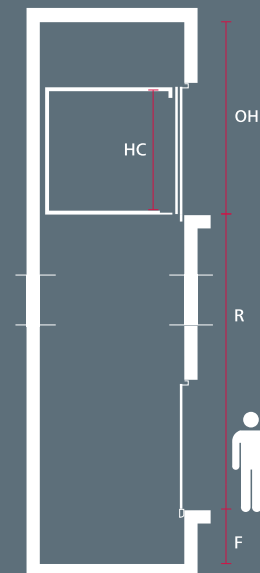
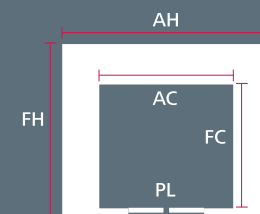
ACCESSIBILITY IMPROVEMENT PACK (optional)

- Folding seat
- Push-buttons with Braille engravings
- Light curtain
- Voice announcer
- Audible signals

OTHER EXTRAS

- Stand-by.
- Fan
- Extractor
- Sound insulation for the cabinet
- Restricted use by way of key switches
- Panoramic finishes (not available for the 6XL model)

NOTE: Specifications correspond to the basic rate model.

DIAGRAM**STANDARD ENTRANCE****DOUBLE 180° ENTRANCE****TRIPLE ENTRANCE**



Hydraulic



2 to 13 persons



180 to 1000 kg



With machine room and machine room less



Mp Mobi

	S and C SERIES ⁽¹⁾							
	MP MOBI S	MP MOBI M	MP MOBI L	MP MOBI XL	MP MOBI 2XL	MP MOBI 4XL	MP MOBI 5XL	MP MOBI 6XL
Capacity (persons)	2	3	4	5	6	8	10	13
Speed (m/s)	0,15	0,15	0,15	0,15	0,15	0,15	0.15	0.15
Starts per hour	15	15	15	15	15	15	15	15
Power (HP/ kW)	2.7 / 2	2.7 / 2	2.7 / 2	4 / 3	4 / 3	4 / 3	6/4.5	6/4.5
Current (A) ⁽²⁾	5,6	5,6	5,6	10	10	10	10.4	10.4
Q capacity (kg)	180	225	320	375	480	630	800	1000
PL clear opening (mm)	600	700	700	800	800	800	900	900
AC car width (mm)	700	800	1000	1000	1000	1100	1100	1100
FC car depth (mm)	800	900	900	1100	1250	1400	1700	2100
HC useful internal car height (mm)	2100	2100	2100	2100	2100	2100	2100	2100
AH shaft width (mm)	1060	1160	1400	1360	1400	1500	1600	1750
FH shaft depth (mm)	1075	1100	1200	1360	1550	1700	2100	2500
F minimum pit (mm) ⁽³⁾	150 / 645 / 875 / 1004	150 / 645 / 875 / 1004	150 / 645 / 875 / 1004	150 / 645 / 875 / 1004	150 / 645 / NA / 1004	150 / 645 / NA / 1004	200 / 645	200 / 645
OH minimum headroom (mm) ⁽³⁾	2390 / 2814 / 2860 / 3330	2390 / 2814 / 2860 / 3330	2390 / 2814 / 2860 / 3330	2390 / 2814 / 2860 / 3330	2390 / 2814 / NA / 3330	2390 / 2814 / NA / 3330	2850	2850
No. ropes x diameter (mm)	4 x 8	4 x 8	4 x 8	4 x 8	4 x 8	4 x 8	4x10	4x10
Jack: Number - Position	1 - side	1 - side	1 - side	1 - side	1 - side	1 - side	1 - side	1 - side
Max. distance between brackets	1500	1500	1500	1500	1500	1500	1500	1500
Car guide rails	T70 / 70 / 9	T70 / 70 / 9	T70 / 70 / 9	T70 / 70 / 9	T70 / 70 / 9	T70 / 70 / 9	T90/75/16	T90/75/16
Shaft enclosure	Concrete	Concrete	Concrete	Concrete	Concrete	Concrete	Concrete	Concrete

NOTES:
(1) The values included in this table correspond to pre-established conditions and may be modified, according to the specific characteristics of each installation.
(2) Current data for 400 V mains voltage. Optional single-phase power voltage at 230 V.
(3) With compensatory safety measures / Without compensatory safety measures / Economical option / Loft option. Dimensions of Pit and Headroom with automatic landing doors, MASSEN model.

This product is flexible and may be adapted to other shaft dimensions not reflected in the table. Please ask for more information.
Optional: 100 mm pit. Please ask for more information.



the
smart
CHOi)E

FOLLOW YOUR
MIND



FOLLOW YOUR
heart

Real lift, real comfort,
real accessibility





mp moving people

