

# BENOIT SYSTEMES



## LIGHT ASSIST 2.1

[WWW.BENOITSYSTEMES.COM](http://WWW.BENOITSYSTEMES.COM)



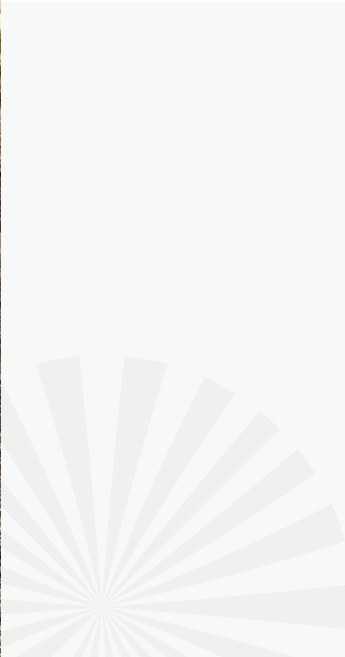




# LIGHT ASSIST 2.1

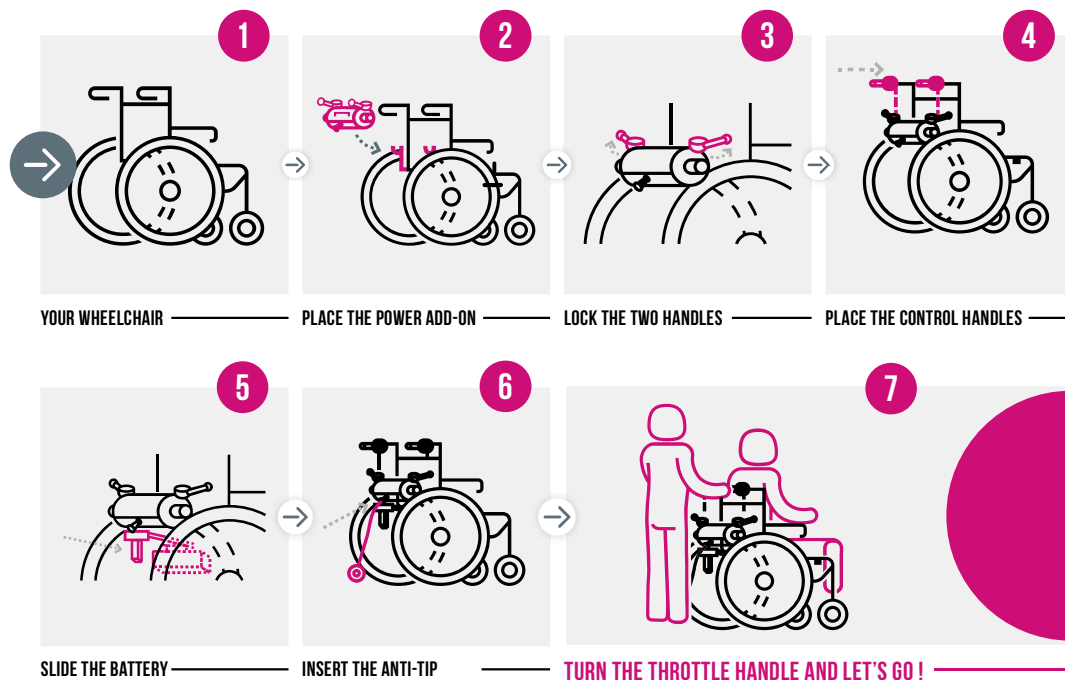
**LIGHT ASSIST 2.1 is designed for people who cannot drive by themselves for their daily movements.**

For some disabilities, a third party assistance is required for any journey. The power add-on LIGHT ASSIST 2.1 acts like a powerful and compact attendant aid preventing the third person from exerting him or herself.





# HOW DOES IT WORK ?



The extended handles make pavements and other obstacles easier to get over.

Even the highest kerbs will no longer be a problem.

Secure, ergonomic and easy to handle,  
gain more freedom with **LIGHT ASSIST 2.1** !





Let's go for a walk with  
**LIGHT ASSIST 2.1.**





# ADVANTAGES OF LIGHT ASSIST 2.1



LIGHTWEIGHT  
AND EASILY  
TRANSPORTABLE



ADAPTS TO ALL  
WHEELCHAIRS\*  
\*See compatibility guide



INSTANT  
INSTALLATION



INDOORS/  
OUTDOORS



RANGE  
UP TO 15 KM



CAN BE  
TRANSPORTED  
BY PLANE\*



MADE  
IN FRANCE

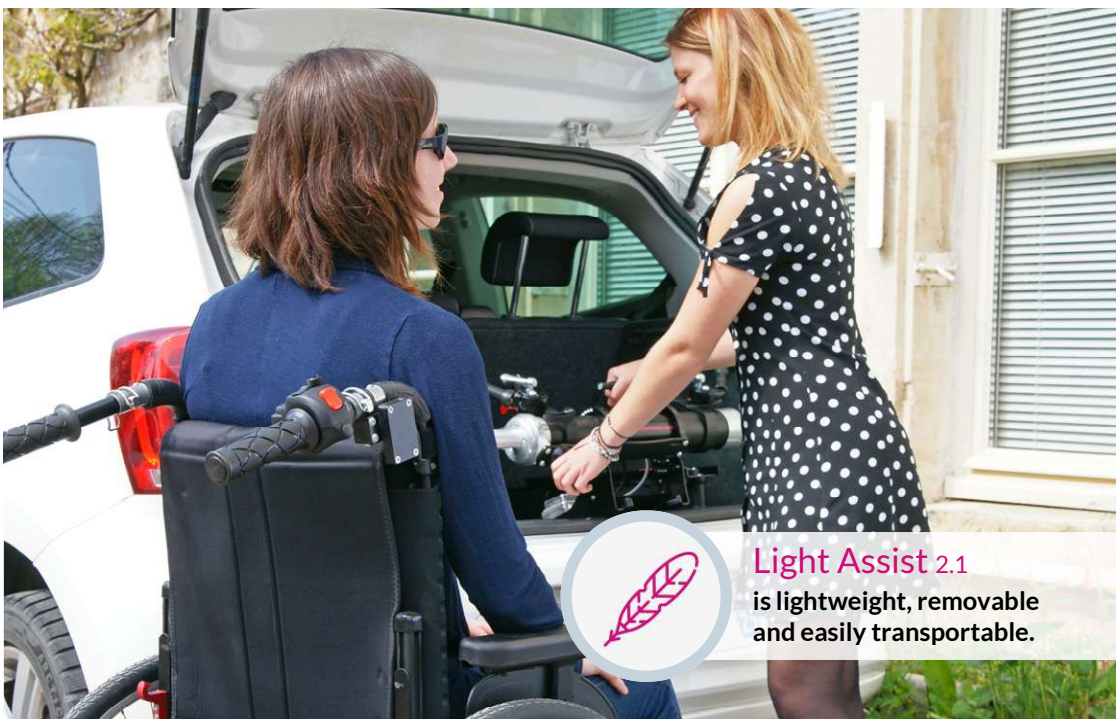


THIRD PARTY  
ASSISTANCE



COLOUR OF  
YOUR CHOICE

\*11.4 Ah battery complies with IATA regulation.



**Light Assist 2.1**  
is lightweight, removable  
and easily transportable.

## KEY FEATURES



Storage  
for the handle



Ergonomic handle  
locking system



Extended  
colour range



Anti-tip for  
safety



Ergonomic  
clutch system



Battery with  
charge indicator

NEW IN 2022

## WIDE RANGE OF COLOUR



### CLASSICS

- BLACK
- WHITE
- BLUE
- RED
- KHAKI

### METALLICS

- MIDNIGHT BLUE
- GREY
- SILVER
- COPPER
- CHAMPAGNE GOLD

### TRENDY

- SKY BLUE
- PINK
- GREEN
- YELLOW
- ORANGE



“ Since we have had Light Assist, we have been enjoying taking walks together and going out with friends. It has become a must since my husband has had the hip surgery. ”

Bernadette  
User since 2018



# TECHNICAL DETAILS

Our power add-ons can be fitted on most tilt-in-space and manual wheelchairs starting from **32 cm seat width and 40 cm between the wheels**.

Maximum user weight \_\_\_\_\_ 120 kg  
Power add-on weight \_\_\_\_\_ 8,8 kg

## FEATURES

Max speed \_\_\_\_\_ 10 km/h programmable  
Motor \_\_\_\_\_ 2 x 130W motors with brakes  
Climbing ability \_\_\_\_\_ 5° (9%)  
Manufacturer's warranty \_\_\_\_\_ 24 months for the power add-on and the battery



**Compatible wheelchairs:** a compatibility guide is available to know the models of wheelchairs on which Light Assist 2.1 can be installed, in compliance with general requirement for safety and performance stated in the European Regulation related to medical devices. [Find out more](#)



**11.4 AH LITHIUM-ION BATTERY COMPLIES WITH APPLICABLE IATA REGULATIONS FOR AIR TRAVEL.**

Model	Weight	Range
— Lithium-ion battery	— 3,85 kg	— up to 15 km







07/2022 - Réalisation : Edjoit K - Photos non contractuelles - Photos : Lionel Dupoux / Photo 123

YOUR LOCAL DEALER

REQUEST YOUR **FREE TRIAL !**

📍 7 Rue du Pont,  
21450 Billy-Lès-Chanceaux, FRANCE

☎ (+33) 3 80 96 54 65

@ [export@benoitssystemes.com](mailto:export@benoitssystemes.com)



This medical device is a regulated health product and bears the CE marking. As manufacturer, BENOIT SYSTEMES declares that this products is Class I medical devices and complies with EU Regulation 2017/745/CEE on medical devices.