

NOVUS

CRASH TESTED for the forward-facing
transport of the pushchair in a motor vehicle
(private vans/cars, buses..)

INGLESE cod. 22220 -05-19



upholstery even more

- **Breathable**

- **Durable**

- **Resistant**

(Martindale method: 100.000 cycles)
UNI ENI ISO 12947



Novus passed CRASH TEST according
to the ANSI RESNA WC/19

 design and quality
MADE IN ITALY since 1980

ORMESA®



(fig.1)



(fig.2)

- **Aluminium FOLDABLE FRAME** (fig.1) painted with non-toxic epoxy powders.
- **Padded, ergonomic and removable UPHOLSTERY.** It is fixed to the seat thanks to press-studs. It was designed to make the change of position of the side supports easier, and to fix or unfix the accessories without causing any trouble to the child while he is seated. It grows up with the frame
 - ▶ **Oeko-Tex Certificate:** for all fabrics that are in direct contact with the skin, to guarantee quality and safety for health.
 - ▶ **Fireproof:** the fire retardant properties are inherent to the yarn and they do not come from additional treatments
 - ▶ **Recyclable:** production cycle with low environmental impact
 - ▶ **Maximum resistance to rubbing** Martindale method: 100.000 cycles UNI ENI ISO 12947
 - ▶ **Colours durable and highly resistant** to sweat, light, dry cleaning and washing machine.



CERTIFICATE
MED annex A.1/3.19-20-21



- Closing frame **locking system**
- **SEAT**, adjustable in width and depth
- **RIGID BACKREST**, adjustable in height and in tilt
- **LEGREST** adjustable in tilt with quick release mechanism
- **Flip-up FOOTREST** adjustable in tilt
- **REMOVABLE WHEELS** snap-off (fig. 2), sliding on ball bearings:
 - front 17,5-cm. (7"), swivel, puncture-proof
 - rear 30-cm. (12"), pneumatic. Puncture-proof rubber or request
- **INDEPENDENT DRUM BRAKES**, without any dangerous projections



852 HEADREST with Parietal Supports. It is adjustable in height and width



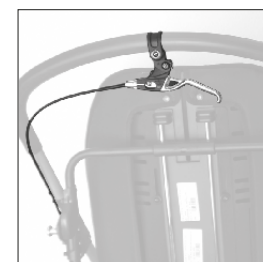
838 PADDED SIDE SUPPORTS



834 ABDUCTION BLOCK



892 FOOT PLATE PADDED COVERING



905 HAND BRAKE
(rear view)



863 HEADREST with Occipital-parietal Supports. It is adjustable in height, in width, in tilt, forwards and backwards



853 VEST HARNESS



903 FIVE POINT VEST HARNESS



906 FIVE POINT HARNESS



868 SIDE WRAPPABLE and FLEXIBLE SUPPORTS for the trunk. Height and width adjustable



894 45° BELT FOR THE PELVIS



817 INGUINAL STRAPS



844 SIDE PROTECTING COVERS

NEW



834 ADJUSTABLE ABDUCTION BLOCK



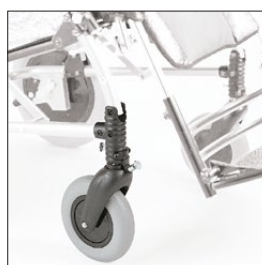
824 TRANSPARENT TRAY



839 FRONT HANDLE



827 FOOTSTRAPS



812 WHEEL DIRECTION LOCKS



818 THERMAL COVER



819 CANOPY



825 RAIN COVER to be fixed to the 819 canopy



854 PARASOL matching with the upholstery



922 BOTTLE HOLDER



858 MESH BASKET



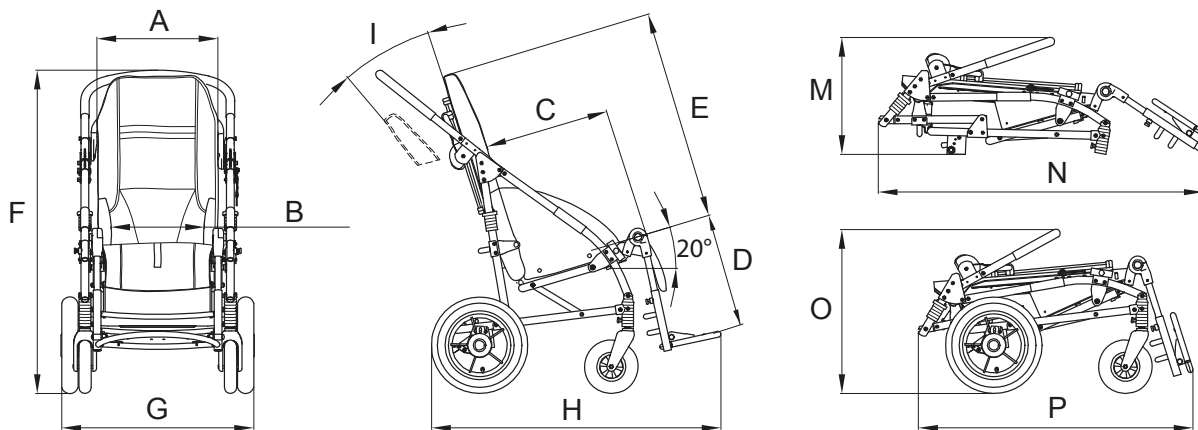
911 VENT TRAY, for carrying medical equipment (rear view)



891 SET OF 4 TIE DOWN HOOKS for the forward-facing transport of the pushchair in a motor vehicle (private vans/cars, buses..)



The Novus is available in three sizes

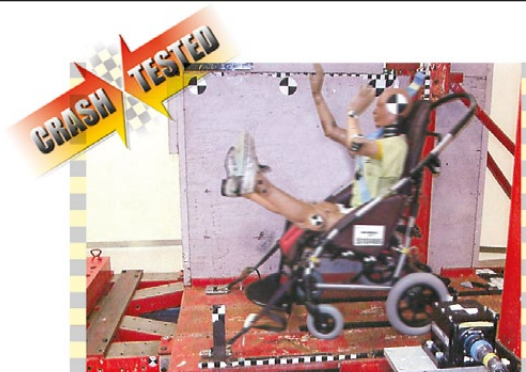


Sizes	Max. User Mass	A	B	C	D	E	F	G	H	I	M	N	O	P	Weight of the aid	Weight of the aid without wheels
2	kg. 45	cm. 40	cm. 20-30	cm. 30-36	cm. 27-37	cm. 65-71	cm. 103	cm. 60	cm. 87	20°	cm. 41	cm. 101	cm. 57	cm. 83	Kg. 19.5	Kg. 15.9
3	kg. 55	cm. 43	cm. 24-34	cm. 35-41	cm. 30-40	cm. 71-80	cm. 103	cm. 63	cm. 93	20°	cm. 41	cm. 105	cm. 57	cm. 84	kg. 20.9	kg. 17.3
4	kg. 65	cm. 46	cm. 28-38	cm. 39-45	cm. 30-44	cm. 75-81	cm. 107	cm. 66	cm. 96	20°	cm. 42	cm. 110	cm. 56	cm. 90	kg. 22.1	kg. 18.5

HYPHEN SEPARATED NUMBERS INDICATE A MINIMUM AND MAXIMUM RANGE OF ADJUSTMENT

PRODUCT TESTED
TÜV HANNOVER

PRODUCT REGISTERED
FDA (USA)



Novus passed CRASH TEST according to the ANSI RESNA WC/19

WARNING:

- fits the ISO 10542 or SAE J2249 compliant 4-POINT STRAP-TYPE TIEDOWN, provided by the vehicle
- it is required for the child to wear both pelvic- and shoulder-belt-type restraints, to be compliant either with ANSI RESNA WC/19 or ISO 7176-19
- postural belts and harnesses such as our 828, 853, 868, 894, 903, 906 are not approved for the use as an occupant restraint system
- the vehicle must be suitable for transporting orthopedic pushchairs in compliance with current law
- read the warnings and instructions given in the user's & maintenance book

Authorized dealer

ORMESA[®]
s.r.l.

On with the Future

Via A. Da Sangallo,1 - 06034 FOLIGNO (PG) ITALY
TEL. +39 0742 22927-FAX +39 0742 22637
info@ormesa.com-www.ormesa.com

