



LOIRE Toilet Support Arms

Oval shaped profile is great to push on and pull against
Easy to raise and lower
Very stable in use for extra confidence
Easy to clean

- The wave design or the Raised Attachments can virtually eliminate the need for height adjustment.
- Each has high level support at the front, which when set at 80cm high, meets the needs of nearly all standing transfers. This high support is clear of the front of the toilet pan.
- The lower levels alongside the toilet provide a second level for easy lowering or standing, while providing a good height for side transfers.
- When sitting, the lower height makes dressing and undressing easier.

LOIRE Toilet Support Arms

LOIRE toilet support arms in two versions - Straight or Wave profiles.
Both Straight and Wave are delivered in length 90 cm

LOIRE-straight 80
Item 40-40110



Max load: 80 kg
Length: 90 cm

LOIRE-wave 80
Item 40-40115



Max load: 80 kg
Length: 90 cm

LOIRE-straight 135, with leg
Item 40-40120, telescopic leg



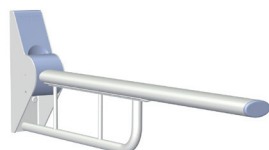
Max load: 135 kg
Length: 90 cm

LOIRE-wave 135, with leg
Item 40-40125, telescopic leg



Max load: 135 kg
Length: 90 cm

LOIRE-straight 140
Item 40-40130



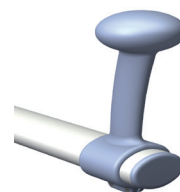
Max load: 140 kg
Length: 90 cm

LOIRE-wave 140
Item 40-40135



Max load: 140 kg
Length: 90 cm

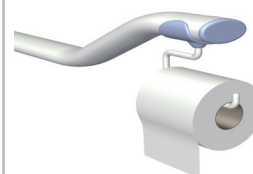
Get up/sit down
attachment
Item 40-40925



Towel holder
Item 40-40915



Toilet roll holder
Item 40-40910



Wall Plate for height
adjustment:
LOIRE:
Item 40-40905



ROPOX Tips

- Fix front of rail at 80cm from floor for most standing transfers.
- If using straight rail with Get Up/Sit Down attachment, place rail at 68cm from floor.
- For sideways pulling on rails, the Loire offers great stability.
- If height adjustment is still considered necessary, the Wall Plate accessory can be used with all the models to give 12cm of adjustment.

ROPOX
BETTER WAYS TO BETTER DAYS

ROPOX A/S
Ringstedgade 221
DK-4700 Næstved
Tel. +45 5575 0500
Fax +45 5575 0550
info@ropox.dk
www.ropox.com