

Solus



Stannah is a family-run British company which has been making pioneering products since 1860. We are the world's leading stairlift manufacturer with an unrivalled reputation for quality, integrity and service. We uphold this reputation by applying recognised standards to every product we make.

Solus

The Solus is leading the next generation of stairlifts. Developed hand in hand with Seymour Powell, one of Europe's leading product design agencies, it combines contemporary design with the values that Stannah upholds: comfort, reliability and safety.

The chair

The ergonomically designed chair can be upholstered with either woven fabrics or soft leather, which comes in a range of attractive shades so the chair blends in with your home.

The Solus is operated with a unique easy-to-use control that you just move left or right, depending on whether you want to go up or down the stairs. It has a range of sensors built in that both prevent the stairlift moving until you're securely in the chair, and that automatically stop the stairlift in the event of an obstruction on the stairs.

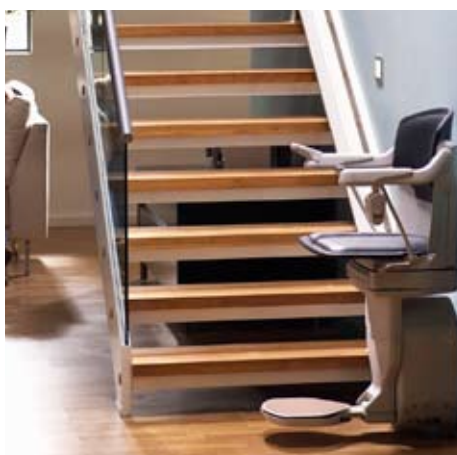
Folding the chair also couldn't be easier, as the whole chair folds away in one simple action. Once the stairlift has stopped, simply raise the chair arms and the seat and footrest fold up simultaneously.

Straight rails

On straight stairs, the Solus runs along a strong rail with a slim line design and is fitted to the stairs, not to the wall, so installation is quick and clean. Straight rails are available in either silver or bronze.



Straight rail available in silver or bronze



Straight rail

Curved rails

On curved stairs, the Solus runs along slim, twin rails that are tailor-made precisely to ensure the best fit possible to your stairs. Curved rails are available in a pearl colour that easily blends with any décor. The rail is always fitted to the stairs, not to the wall and in most cases can be fitted on either side of the staircase.



Curved rail

The service

We pride ourselves on the reliability of our stairlifts. To give you absolute peace of mind, they all come with a full guarantee, a free first service, and support from our nationwide teams of locally-based engineers, who are on standby 24-hours a day, 365 days a year to respond quickly in the unlikely event that you need assistance.



1. Unfolding a Solus is exceptionally easy, with a simple one-step folding action. Just lower the chair arm and the seat and footrest unfold with it.



2. Once unfolded, take as much time as you need getting seated as our seat-load sensor ensures it will not move until you're safely in the chair.



3. Gentle pressure on the easy-to-use control makes your stairlift move smoothly up or down the stairs.



4. When you reach the top of the stairs, you can swivel the chair round to face the landing so you can get off in complete safety.



5. You can leave the stairlift in its swivelled position at the top of the stairs as an effective safety barrier or fold it flat against the wall.



6. When not in use, the stairlift can be folded flat against the wall so it takes up less space in your home and leaves the stairs clear for other users.



Upholstery material

can be chosen from soft woven fabrics or luxurious leather, available in different shades.

Unique easy-to-use control

just requires your hand to move it left or right, depending on the direction you want to go, so it's easy to use even for those with less able fingers. The control can be positioned on either arm and incorporates a key to immobilise it, ideal if children are around.

Adjustable arms

mean your stairlift is tailored to you, with chair controls set to a position that is comfortable.

Removable link bars

make for an easy wheelchair transfer, if required.

Manual swivel levers

manually swivels the chair to face the landing and locks the chair to avoid it accidentally swivelling.

Unique seat-load sensor

ensures that your stairlift will not move until you're safely seated.

Adjustable seat height

maximises your comfort and helps you get on and off the chair. (Available on straight rail only.)

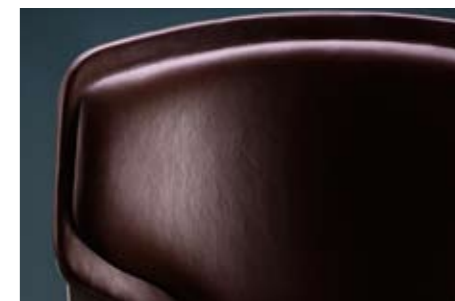


Remote control
allows you to call the stairlift to you or send it to someone at the bottom of the staircase.

• Curved model featured.

Ergonomically-designed chair

with a supportive back and a soft, wide seat.



Unique one-step folding

means there's no need to bend down to fold your stairlift away. Just raise the armrest and the seat and footrest fold up with it. This is easy to do and an important safety consideration, particularly at the top of the stairs.



Easy-to-use seat belt

can be fastened with one hand to secure you in the chair.



Swivelling seat

allows you to get off in the safest, most convenient position at the top of the stairs.

Optional two-way powered swivel

enables you to get off the seat in the most convenient position at the top and bottom of the stairs. A manual one-way swivel which works at the top of the stairs is fitted as standard.



Safety edges

ensure the stairlift stops gently but immediately if it encounters an obstruction on the stairs.



Stannah contact details:
Stannah Stairlifts
Watt Close
East Portway
Andover
Hampshire
SP10 3SD

Tel: 0800 715358
Fax: 01264 338043

www.stannahstairlifts.co.uk

Our company policy is one of continuing product improvement. We therefore reserve the right to alter the product specifications and to change and improve design at any time. Full operating instructions are supplied for all products. Stannah is a registered trademark. The CE mark indicates that this product complies with the applicable European directives which relate to health, safety, environment and consumer protection. For design, manufacture and installation, Stannah Stairlifts Limited were the first stairlift manufacturer to obtain full qualification to British Standard BS5776 (1996). An example of this product has been independently tested and approved.

• Straight model featured on front cover

