


Item No:

## AdaptLine - Height Adjustable Washbasin

### Product details

↑ Manual height adjustment	20 cm (70-90 cm)	
🔧 Operation	Crank	
🔧 Configuration	Visible installations	
↗ Dimensions	H: 38 cm x W: 42 cm x D: 6 cm	

### Description

AdaptLine is the flexible and elegant solution when you need a smaller bathroom sink, which will fit most interiors. Adaptline is a small, wall-mounted sink-unit that can be easily adapted to existing water installations and drains. You can adjust the height manually (20 cm) with a handle, and the design makes the unit easy to clean which allows you to keep a high level of hygiene.

All installations are visible on this solution. There are 6 types of bathroom sinks to choose from so you can be sure to get the model that fit the users best.

### Specifications

Power	Manual
Operation	Crank
Mounting	Wall-mounted
Configuration	Visible installations
Max. User weight according to ISO 17966:2016	Unit: 200 kg WBR100, WBR101, WBR102, WBR103: 200 kg WBR200, WBR201: 165 kg
Material	Unit: Aluminum. Coated steel. Stainless steel. ABS plastic.

Item No:

## AdaptLine - Height Adjustable Washbasin

Standard color

White

Included

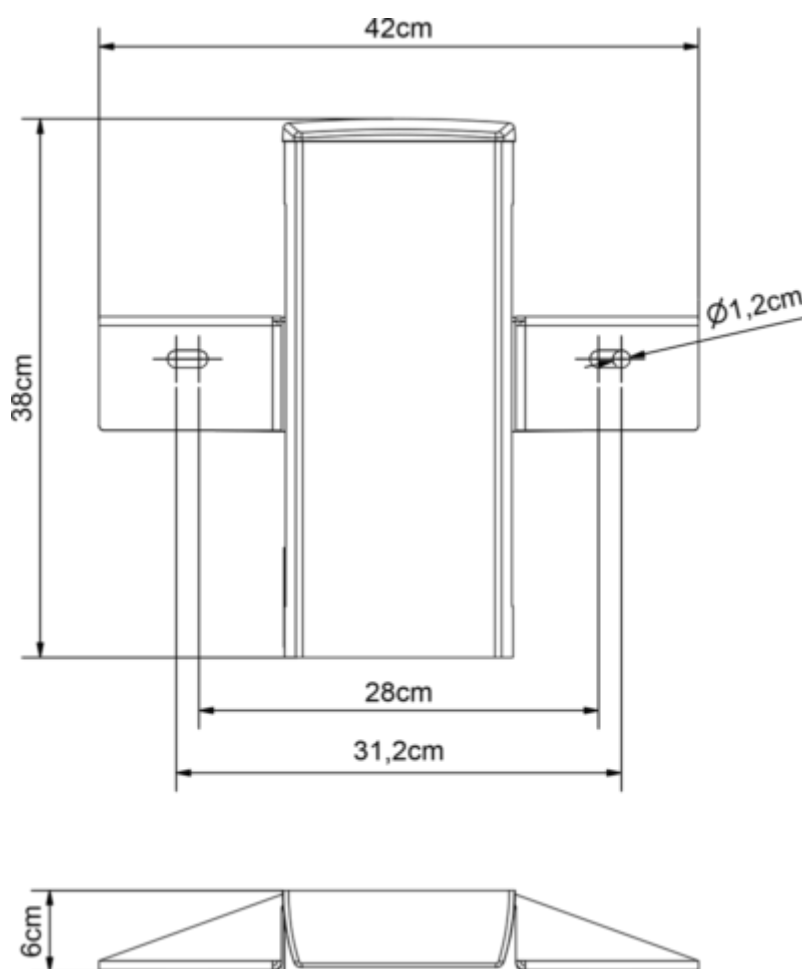
VVS kit

Standard

Manufactured in accordance with the following standard: DS/ISO 17966:2016

CE Certified

### Line drawing



### Accessories

Item No:

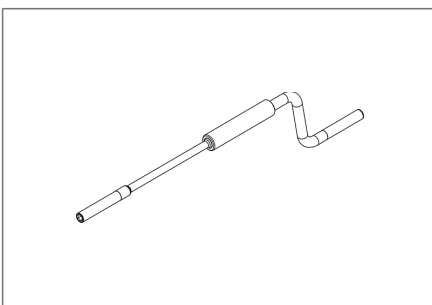
## AdaptLine - Height Adjustable Washbasin



Item no:

### Washbasins

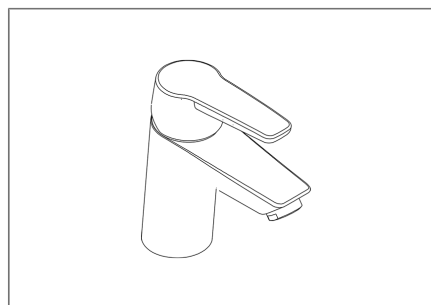
Different models of washbasins with/without overflow, without handles, or with multiple handle options. **Choose variant**



Item no: 40-42170

### Flexible Handle

The flexible handle must always be ordered. For project quantities, there is not always a need for 1 pc./sink.

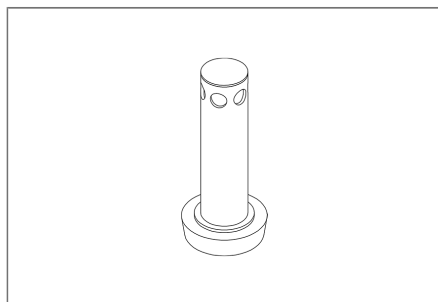


Item no:

### Mixer tap

Choose between a standard mixer tap or one with an extended lever.

**Choose variant**



Item no: 40-40935

### Plug With Overflow

Plug with built-in overflow for use with sinks without overflow.

