

# URSUS HOME™

Special needs stroller

URSUS HOME™ is a stable and comfortable stroller designed for the daily rehabilitation of children with locomotor dysfunctions. Its construction includes an extensive system of supports and belts, ensuring safety and confidence for the child. The stroller allows for seating or half-lying positions, making it ideal for meals, play, therapy exercises, and rest. With adjustable seat height, backrest, footrest, and an infinitely adjustable tilt-in-space function, caregivers can easily adapt the stroller to the child's needs. The durable HYDRO™ upholstery and reversible COMFORT pad enhance comfort. The compact design is ideal for tight spaces, and the ClickClack™ system allows for quick seat detachment and attachment to other products in the URSUS™ range. Available in two sizes.



Lightweight

24<sup>+</sup>

24-month warranty



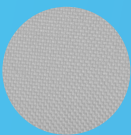
Stable construction



Easy operation

## Colors

**HYDRO™ upholstery**  
Standard equipment

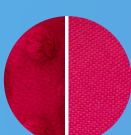


Light gray

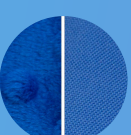
**REVERSIBLE PAD COMFORT**  
Standard equipment



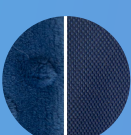
Rose



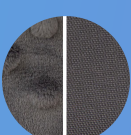
Ruby



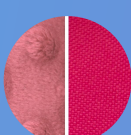
Ocean



Space



Lava



Lilac



5-point belts provide the highest level of security.



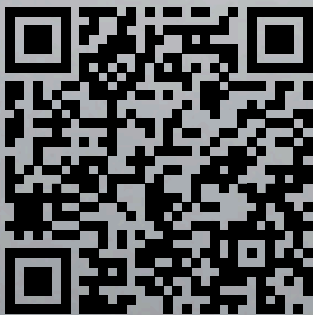
The stroller is equipped with a cotton-washable, reversible COMFORT pad available in one of 5 color options.



**100 - 150 cm**  
Indicative user height



**35 - 50 kg**  
Max. user weight



For **more details** about the product, please visit our website.

**This is a medical device.**  
**Use it in accordance with the user manual or the label.**

### INDICATIONS

Cerebral palsy (CP) – various types and forms | Brain and spinal cord injuries of various etiologies with limb paresis, severe balance disturbances, and coordination impairments | Demyelinating diseases (multiple sclerosis – MS, amyotrophic lateral sclerosis – ALS, and others) | Meningocele | Muscle diseases with paresis and paralysis (including dystrophy, myasthenia gravis, polymyositis) | Genetic syndromes with limb paresis | Degenerative and metabolic diseases of the nervous system | Degenerative and rheumatic joint diseases | Other diseases with limb paresis, paralysis, and musculoskeletal impairments | After injuries, following traumatic brain injuries or spinal cord injuries with limb paresis and paralysis, particularly with quadriplegia (as part of the rehabilitation process or as permanent orthopedic support)

### CONTRAINDICATIONS

**Observation:** Monitor user during standing. Stop therapy if paleness, sweating, fainting, joint overload, or body deformations occur; consult with a doctor or physiotherapist | **Absolute Contraindication:** Critical condition of the user. | **Relative Contraindications:** Resting hypertension > 200/110 mmHg, pulmonary hypertension, heart rhythm disorders, unstable asthma, unstable metabolic issues, moderate heart valve disease. | Conditions like healing fractures or severe osteoporosis that prevent weight-bearing | Incomplete fracture healing (unless approved by a doctor) | Postoperative joint load restrictions | Pain from dislocation, excessive tissue stretch, or pressure; dislocation without pain is not contraindicated | Significant hip/knee flexion or ankle contractures; ensure no excessive pressure or stretch on affected areas.