

URSUS™ is an ultralight stroller designed for daily rehabilitation of children with locomotor disabilities. Its high-strength aluminum frame and cushioned chassis ensure durability and comfort. The ClickClack™ feature allows for easy seat swapping, while a wide range of adjustments, including seat width, depth, backrest height, and tilt angle, offer personalized comfort. The stroller features durable HYDRO™ upholstery and a reversible COMFORT pad. It can be converted into a lounge for sleep and is available in two sizes with numerous accessories to meet individual needs.



Lightweight



24-month warranty



Stable construction

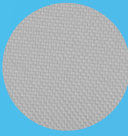


Easy operation



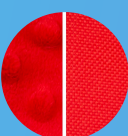
Colors

HYDRO™ upholstery
Standard equipment

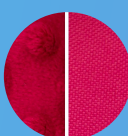


Light gray

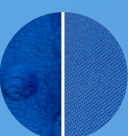
REVERSIBLE PAD COMFORT
Standard equipment



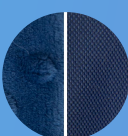
Rose



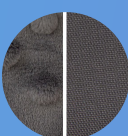
Ruby



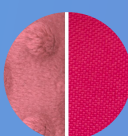
Ocean



Space



Lava



Lilac



5-point belts provide the highest level of security.



The stroller is equipped with a cotton-washable, reversible COMFORT pad available in one of 5 color options.



100 - 150 cm
Indicative user height



35 - 50 kg
Max. user weight



For **more details** about the product, please visit our website.

This is a medical device.
Use it in accordance with the user manual or the label.

INDICATIONS
Cerebral palsy (CP) – various types and forms | Brain and spinal cord injuries of various etiologies with limb paresis, severe balance disturbances, and coordination impairments | Demyelinating diseases (multiple sclerosis – MS, amyotrophic lateral sclerosis – ALS, and others) | Meningocele | Muscle diseases with paresis and paralysis (including dystrophy, myasthenia gravis, polymyositis) | Genetic syndromes with limb paresis | Degenerative and metabolic diseases of the nervous system | Degenerative and rheumatic joint diseases | Other diseases with limb paresis, paralysis, and musculoskeletal impairments | After injuries, following traumatic brain injuries or spinal cord injuries with limb paresis and paralysis, particularly with quadriplegia (as part of the rehabilitation process or as permanent orthopedic support)

CONTRAINDICATIONS
Observation: Monitor user during standing. Stop therapy if paleness, sweating, fainting, joint overload, or body deformations occur; consult with a doctor or physiotherapist | **Absolute Contraindication:** Critical condition of the user. | **Relative Contraindications:** Resting hypertension > 200/110 mmHg, pulmonary hypertension, heart rhythm disorders, unstable asthma, unstable metabolic issues, moderate heart valve disease. | Conditions like healing fractures or severe osteoporosis that prevent weight-bearing | Incomplete fracture healing (unless approved by a doctor) | Postoperative joint load restrictions | Pain from dislocation, excessive tissue stretch, or pressure; dislocation without pain is not contraindicated | Significant hip/knee flexion or ankle contractures; ensure no excessive pressure or stretch on affected areas.